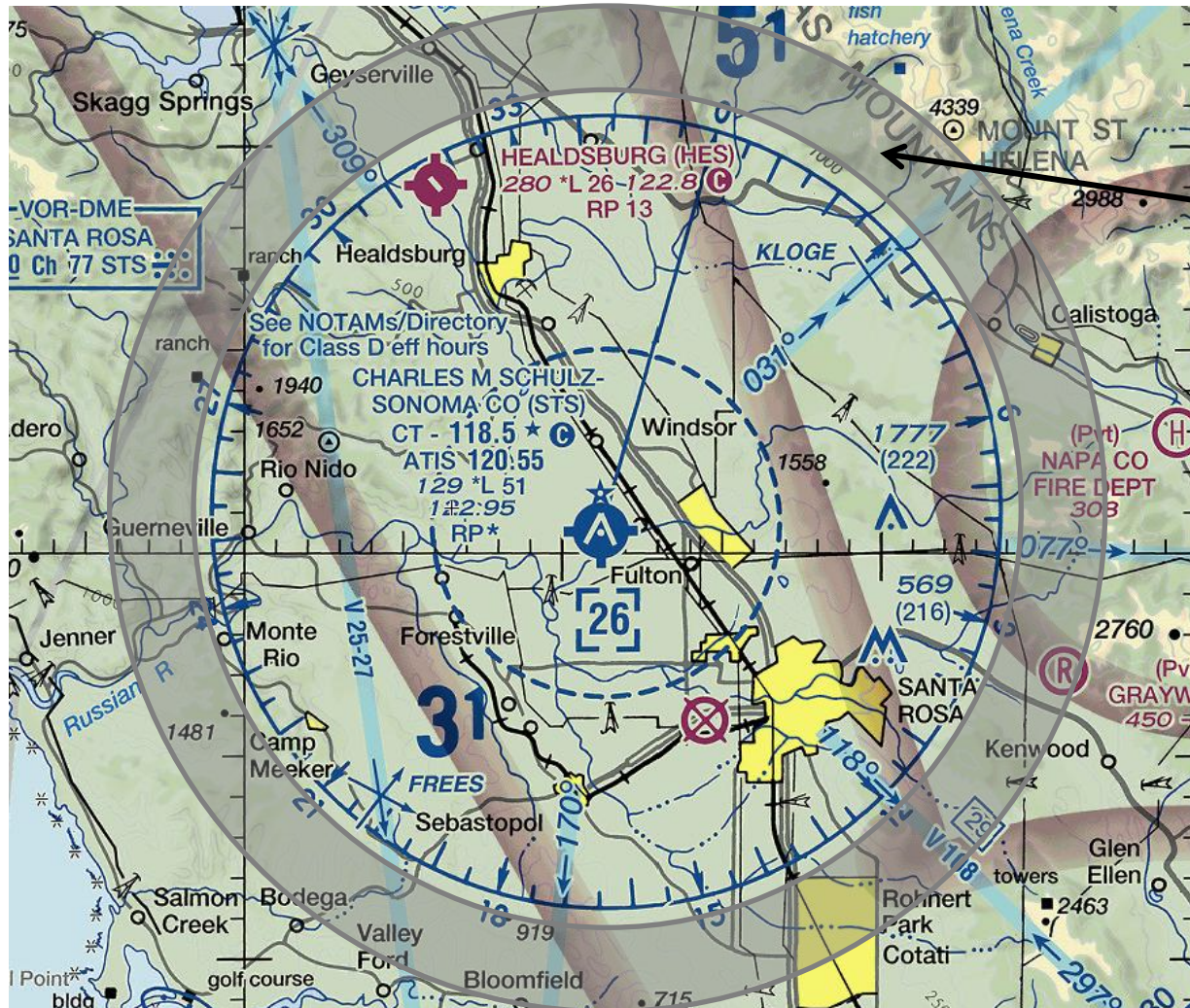


Entering the KSTS Class D Airspace



Listen to the ATIS (120.55 @ KSTS) while you are 10-15nm from the airport.

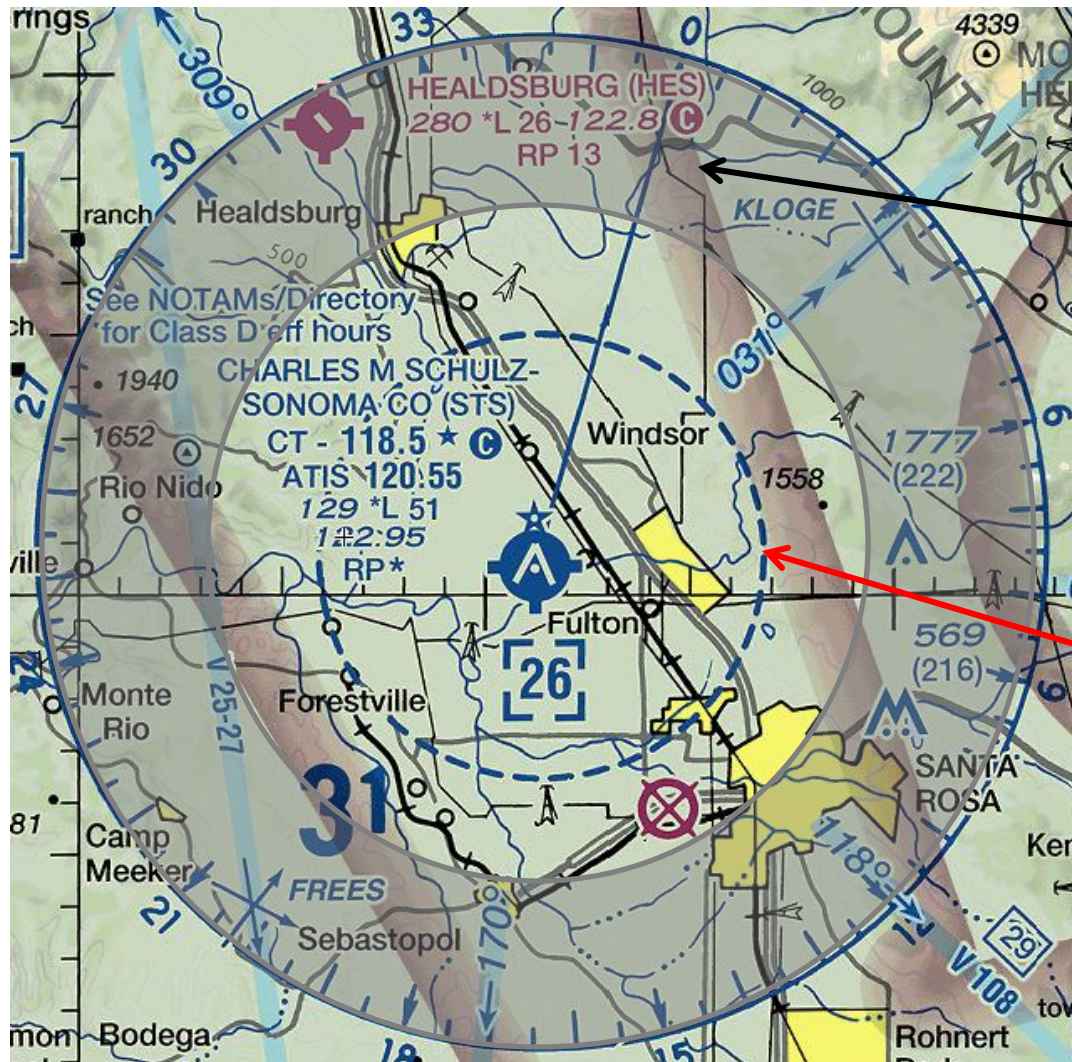
Key elements –

- Winds
- Altimeter setting
- Runway in use

Point your aircraft toward the airport and note your –

- Distance (DME or GPS can help)
- Direction (look at the BOTTOM of your Heading Indicator)
- Altitude

Entering the KSTS Class D Airspace

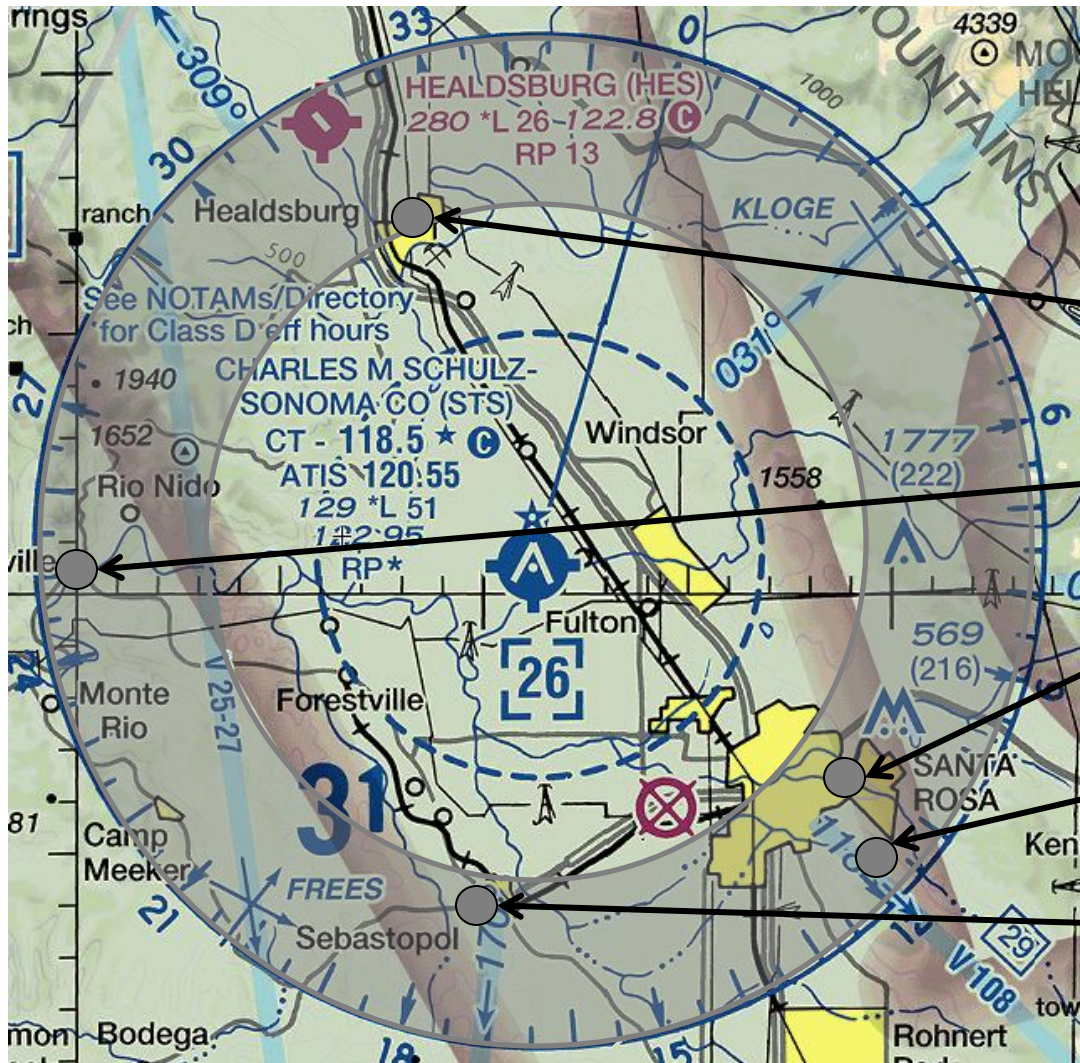


Call the tower 7-10nm from the field and give them your distance, direction, altitude, request, and ATIS code. For example –
“Santa Rosa tower, Flight Design 751JM, seven north at 3,500, request touch and go’s, with Papa.”

You are **REQUIRED** to establish two-way radio communication **BEFORE** you enter the Class D.

- Call in to give yourself enough time (distance)
- If you can’t get a word in, hold (circle) until you can – but **WATCH FOR TRAFFIC**

Entering the KSTS Class D Airspace



You can also give your position over locally recognized landmarks

Healdsburg

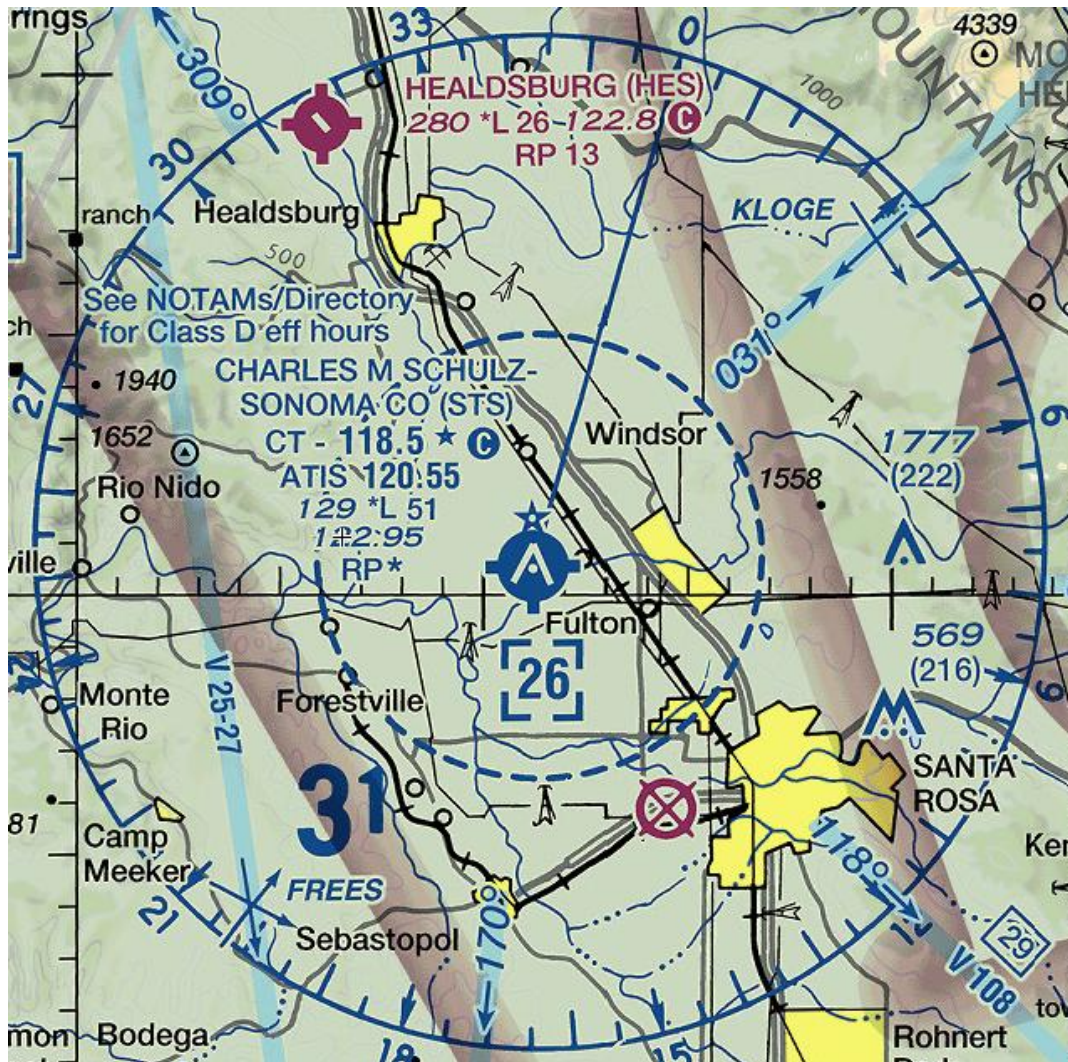
Guerneville

Downtown Santa Rosa

The Fairgrounds

Sebastopol

Entering the KSTS Class D Airspace

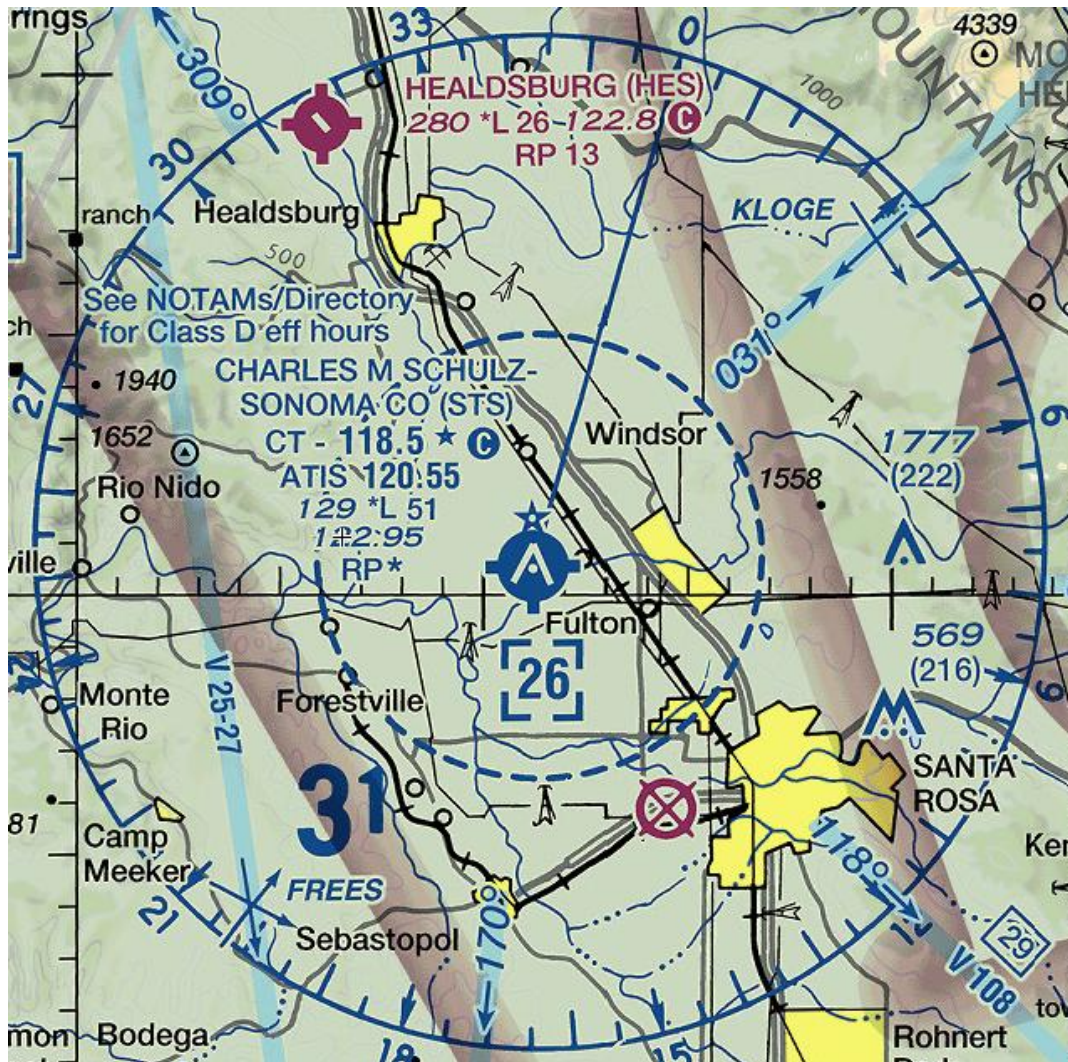


Write down and repeat back what the tower instructs you to do, for example if they say - "Flight Design 751JM enter left traffic runway 14, report downwind."

You would read back - "Left traffic 14, report downwind, 1JM"

If told to report "downwind" then enter the pattern on a 45 **OR** request a direct entry if it is more convenient.

Entering the KSTS Class D Airspace

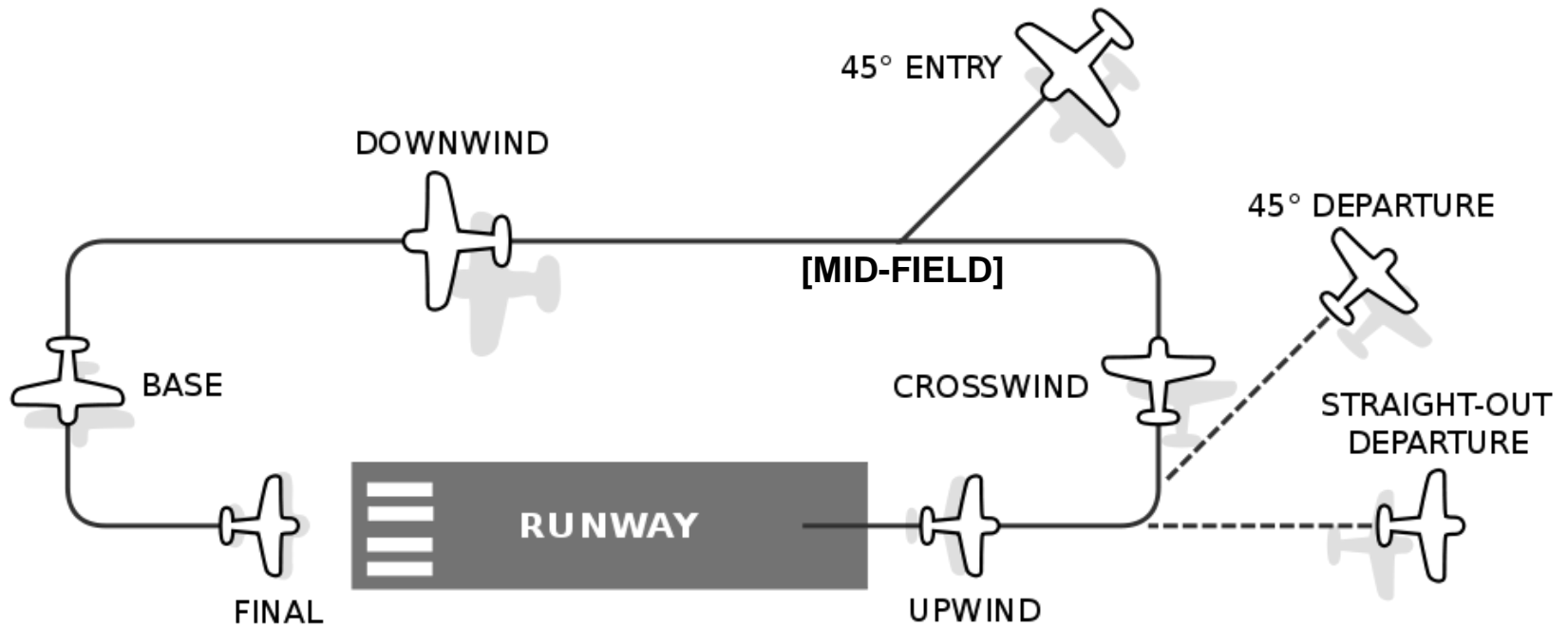


You may be given specific entry instructions if it works out better for your position such as
“straight in runway 14 report a 4 mile final”
Or
“enter left base runway 14, report 3 out on the base”
Or something else.

Comply with the instructions, always ask if you are unsure.

Have your instructor explain and demonstrate (with tower approval) an “Overhead” approach.

STANDARD LEFT HAND TRAFFIC PATTERN



Piper Archer II
TRAFFIC PATTERN
Non-Towered

