

N3717R
CHEROKEE 180
WEIGHT & BALANCE



Max Gross Weight: 2400.00 LBS

Useful Load: 980.08 LBS

Basic Empty Weight (N3717R – Updated 05/20/2018): 1421.92 LBS

Useable Fuel: 48 GAL (288 LBS)

Weight x Arm = Moment (divide by 1000 for smaller numbers)

Moment divided by Weight = Center of Gravity x 1000 = C.G.

Weight and Balance Example:

	WEIGHT	X	ARM	=	MOMENT/1000
Basic Empty Weight	1421.92	X	87.06	=	123.79
Pilot Left Side	180	X	85.5	=	15.39
Pilot Right Side	185	X	85.5	=	15.82
Passengers Aft	250	X	118.1	=	29.53
Baggage Area	50	X	142.8	=	7.14
Fuel	180	X	95.0	=	17.10
Ramp Weight/Mom	2266.92				208.77
Taxi/Run-Up	-1.5	X	-95.0	=	-0.14
Takeoff Weight	2265.42				208.63
Takeoff C.G.	92.09	Refer to Aircraft Flight Manual			
En-route Fuel Burn	-72.0	X	-95.0	=	-6.84
Landing Weight	2193.42				201.79
Landing C.G.	92.00	Refer to Aircraft Flight Manual			

N3717R
CHEROKEE 180
WEIGHT & BALANCE



	WEIGHT	X	ARM	=	MOMENT/1000
Basic Empty Weight	1421.92	X	87.06	=	123.79
Pilot Left Side		X	85.5	=	
Pilot Right Side		X	85.5	=	
Passengers Aft		X	118.1	=	
Baggage Area		X	142.8	=	
Fuel		X	95.0	=	
Ramp Weight/Mom					
Taxi/Run-Up	-1.5	X	-95.0	=	-0.14
Takeoff Weight					
Takeoff C.G.	Refer to Aircraft Flight Manual				
En-route Fuel Burn	-	X	-95.0	=	-
Landing Weight					
Landing C.G.	Refer to Aircraft Flight Manual				

Take Off Distance (Ground Run): _____

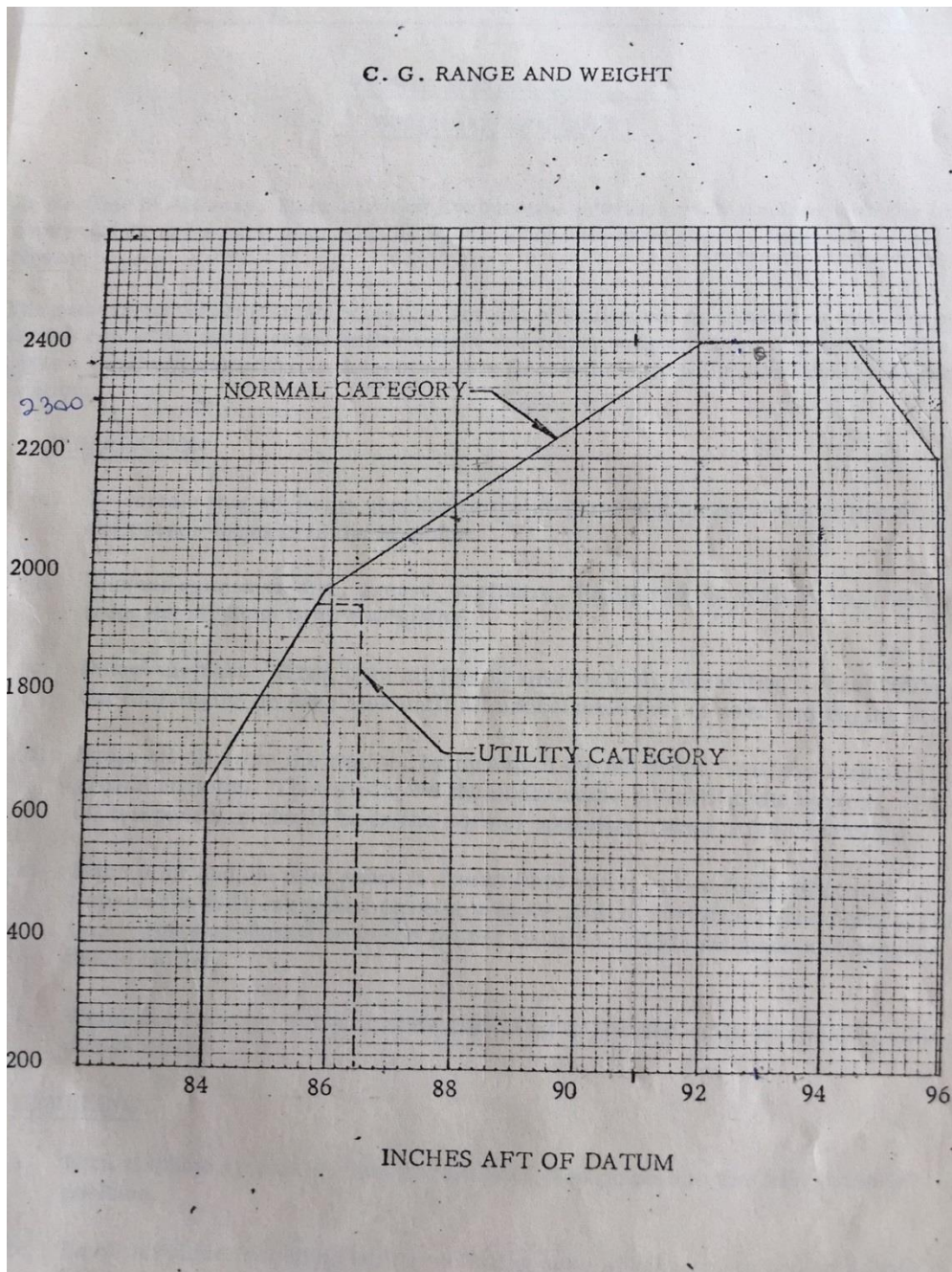
Take Off Distance (Over 50' Obstacle): _____

Vy: _____ **Vx:** _____

Landing Distance (Normal): _____

Landing Distance (Over 50' Obstacle): _____

C.G. Envelope:



Cherokee 180 Profile (MPH):

	SPEED	GAL/Hr	LBS/Hr	RATE
CLIMB to 1000'	85	15.0	90	800 FPM
CLIMB After 1000'	90	15.0	90	500 FPM
CRUISE	125	10.0	60	0
DESCENT	120	8.0	48	500 FPM

Compass Card:

For	Steer	For	Steer	For	Steer
N	360	30	031	60	060
E	090	120	120	150	152
S	180	210	210	240	240
W	269	300	300	330	330

DATE: 05/01/2014

**N3717R
 CHEROKEE 180
 WEIGHT & BALANCE**

PA28-180 V-SPEEDS:

MPH		
Vso	57	
Vs	67	
Vr	50-60	
Vx	74	
Vy	85	
Vfe	115	
Vno	140	
Vne	171	
Va		
#2400	129	
#1950	123	
Best Glide	82	
Max X-wind	15	
Normal App. Speed	80	
Short App. Speed	70	
Enroute Climb	90	